



Buckland Crescent NW3

Parkheath
Sold on Service





Buckland Crescent, NW3

Asking Price £850,000, Share of Freehold

Camden Band E

- A superb, contemporary 2 double bedroom, 2 bathroom apartment
- Set in this popular purpose built block
- Private garage accessed via a security barrier
- Over 800 sq ft on the first floor
- Share of freehold plus 999 years lease from 1976
- Spacious and bright 20ft reception
- High quality kitchen with breakfast bar
- 16ft main bedroom with fitted wardrobes and luxurious en suite shower room
- 11ft second bedroom
- Located moments from Swiss Cottage and Finchley Road underground and Belsize Village, Belsize Park and Primrose Hill are all close by



Belsize Park/Hampstead
208 Haverstock Hill
NW3 2AG
Sales 020 7431 1234
Lettings 020 7431 3104
nw3@parkheath.com

South/West Hampstead
192 West End Lane
NW6 1SG
Sales & Lettings
Tel 020 7794 7111
192@parkheath.com

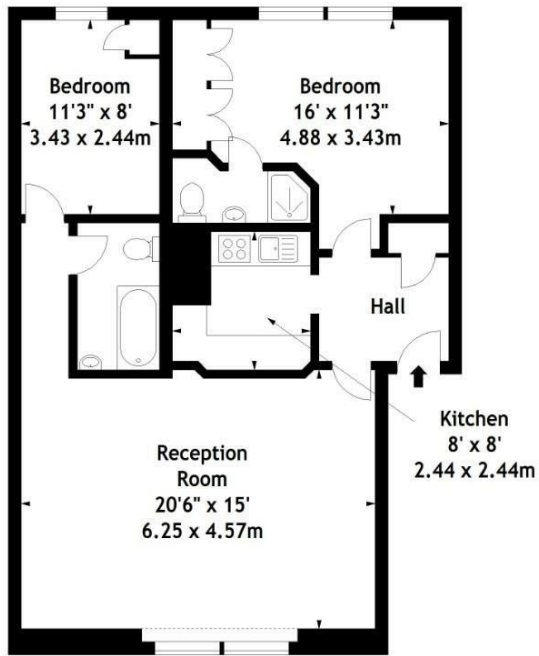
Kensal Rise
54-56 Chamberlayne Rd
NW10 3JH
Tel 020 8960 4845
kensal@parkheath.com

Property Management
192 West End Lane
NW6 1SG
020 7433 6174
pm@parkheath.com

www.parkheath.com

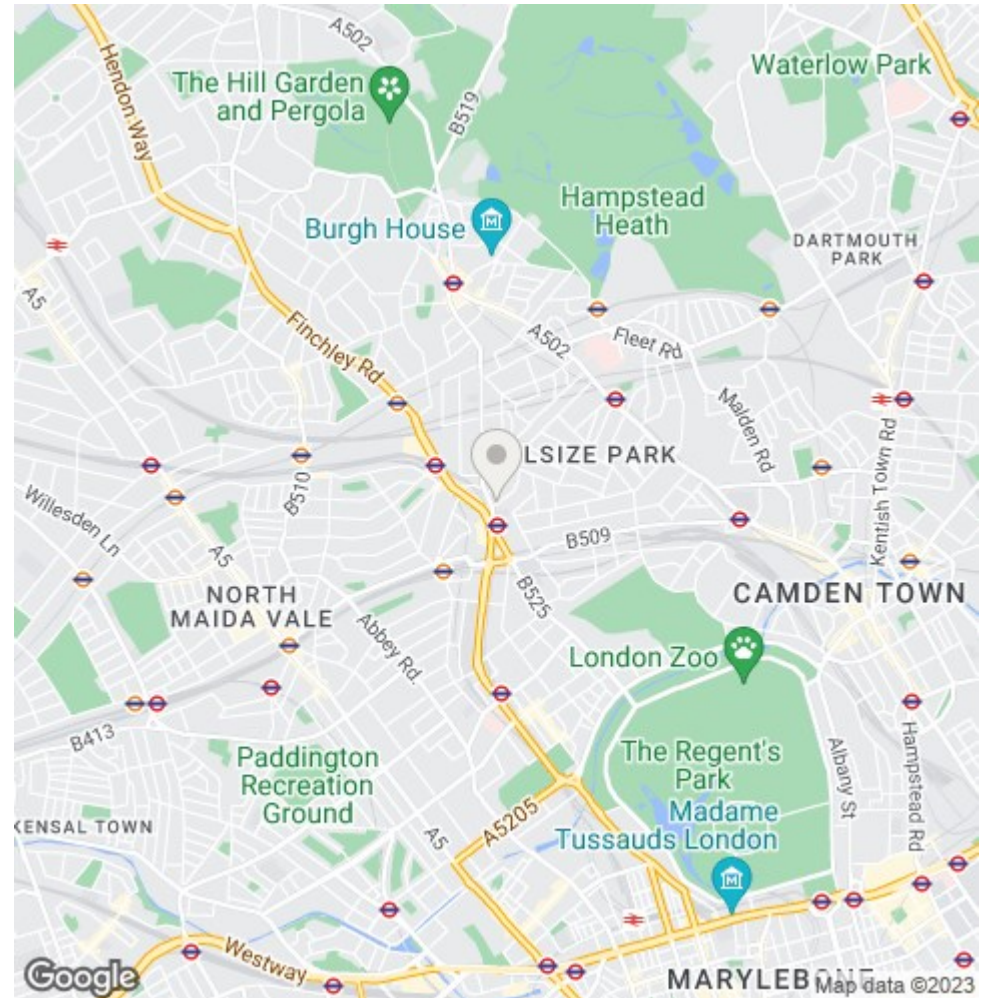
Parkheath
Sold on Service

Buckland Crescent, NW3
Approx. Gross Internal Area
807 Sq Ft - 74.97 Sq M



First Floor

Measured in accordance with RICS guidelines. Every attempt is made to ensure accuracy, however all measurements are approximate. This floor plan is for illustrative purposes only and is not to scale.
© Datagraphy Ltd 2016
Photographs * Floorplans * Virtual Tours
Tel: 0845 643 4401 www.datagraphy.com



The particulars do not constitute part of an offer or contract. The particulars, including text, photographs and plans, are for the guidance only of prospective purchasers/tenants and must not be relied upon as statements of fact. The descriptions provided therein represent the opinion of the author and whilst given in good faith should not be construed as statements of fact. Nothing in these particulars shall be deemed a statement that the property is in good condition or otherwise or that any services or facilities are in good working order. All measurements are approximate